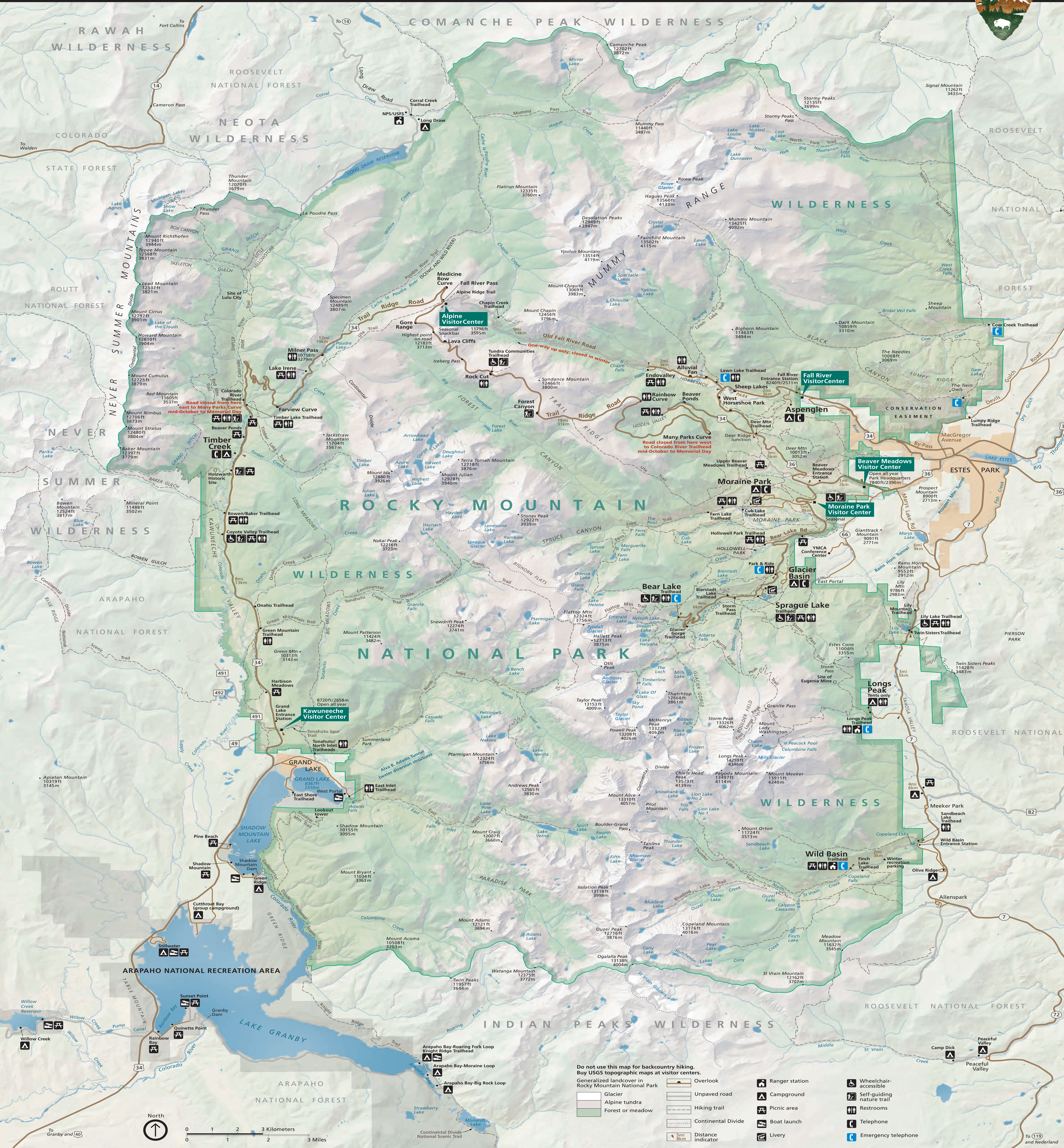


Rocky Mountain National Park

National Park Service
U.S. Department of the Interior



Do not use this map for backcountry hiking.
Buy USGS topographic maps at visitor centers.

Generalized landcover in Rocky Mountain National Park

- Glacier
- Alpine tundra
- Forest or meadow

- Overlook
- Unpaved road
- Hiking trail
- Continental Divide
- Distance indicator

- Ranger station
- Campground
- Picnic area
- Boat launch
- Livery

- Wheelchair-accessible
- Self-guiding nature trail
- Restrooms
- Telephone
- Emergency telephone

