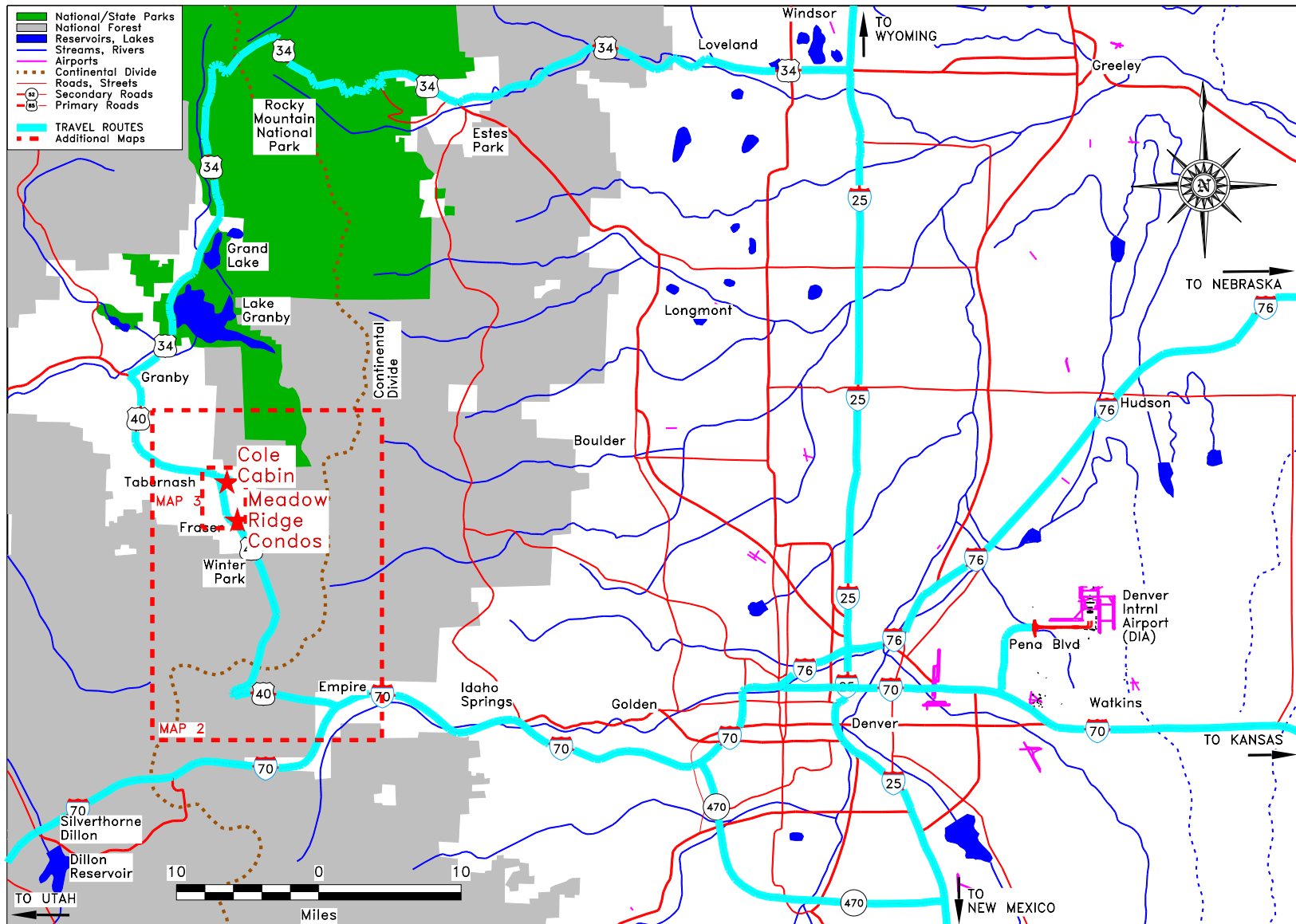


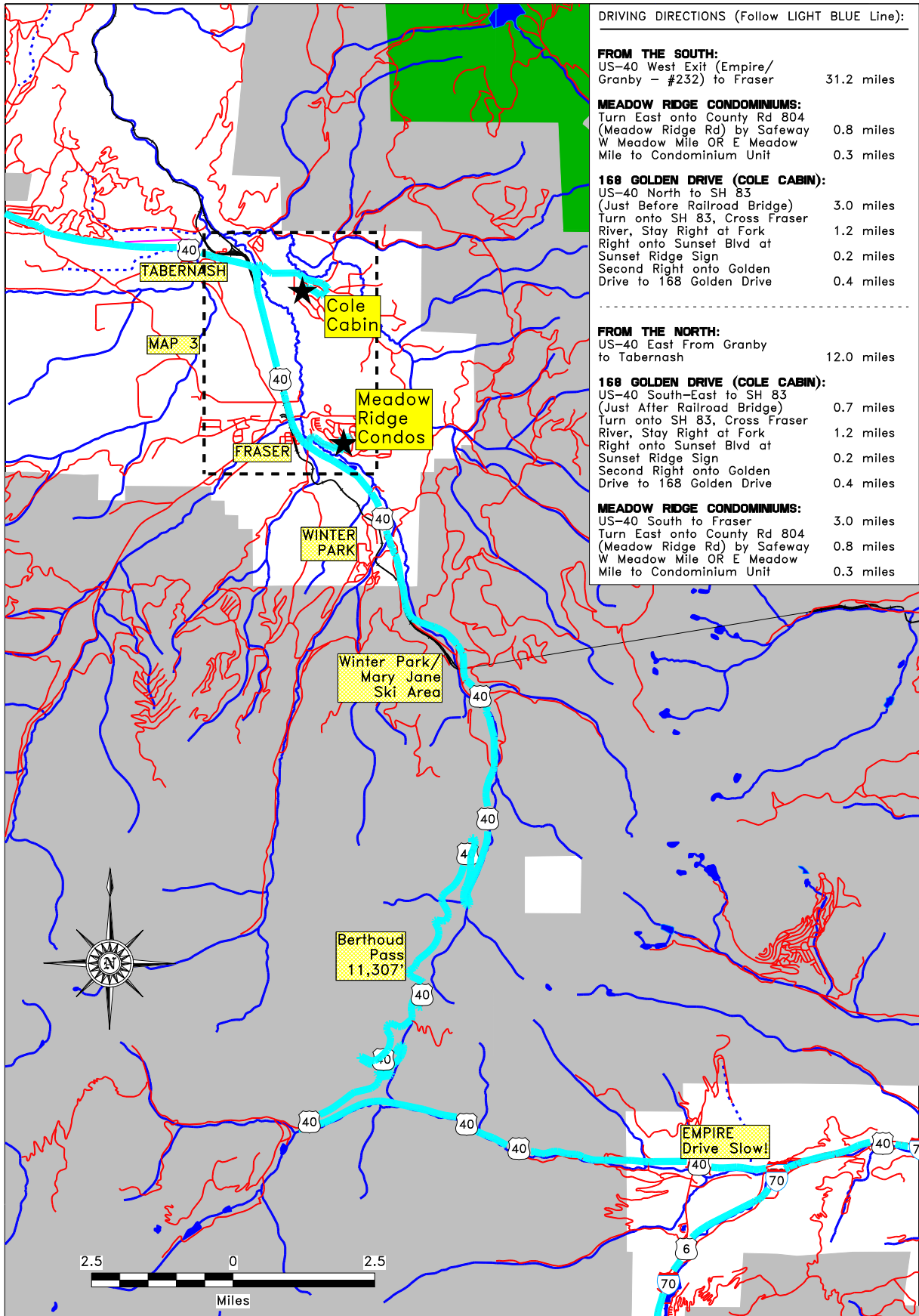
Colorado Again in 2010 Pederson Family Reunion: Driving Directions - Potential Travel Routes

<u>DENVER INTERNATIONAL AIRPORT (DIA) TO US-40 WEST EXIT:</u>		<u>I-25 NORTH (CHEYENNE, WY) VIA I-25 TO US-40 WEST EXIT:</u>	
Pena Blvd West & South to I-70	11.2 miles	I-25 South from Cheyenne, WY to Windsor, CO	45.7 miles
I-70 West to US-40 West Exit (Empire/Granby - #232)	51.0 miles	I-25 South from Windsor	45.4 miles
	62.2 miles	I-76 West Exit (Grand Junction - #216B)	0.9 miles
		I-76 West -> I-70	5.1 miles
		I-70 West to US-40 West Exit (Empire/Granby - #232)	36.5 miles
			133.6 miles
<u>I-76 (JULESBURG) TO US-40 WEST EXIT:</u>		<u>I-25 NORTH (CHEYENNE, WY) VIA US-34 TO 168 GOLDEN CIRCLE:</u>	
I-76 West from Julesburg to Hudson	148.3 miles	I-25 South from Cheyenne, WY to Windsor, CO	45.7 miles
I-76 West from Hudson	25.4 miles	I-25 South from Windsor	4.7 miles
I-25 South Exit (#5A)	0.8 miles	US-34 West Exit (Loveland - #257B)	0.2 miles
I-76 West -> I-70	5.1 miles	US-34 West to Estes Park (E Elkhorn Ave)	33.5 miles
I-70 West to US-40 West Exit (Empire/Granby - #232)	36.5 miles	West on E Elkhorn Ave -> Fall River Rd	1.2 miles
	216.1 miles	West on Fall River Rd -> US-34	3.3 miles
		US-34 West & South	57.3 miles
		Turn Left onto US-40 to Tabernash	12.0 miles
		US-40 South-East to SH 83 (Just After Railroad Bridge)	0.7 miles
		Left onto SH 83, Cross Fraser River, Stay Right at Fork	1.2 miles
		Right onto Sunset Blvd at SECOND Sunset Ridge Sign	0.2 miles
		Second Right onto Golden Drive to 168 Golden Drive	0.4 miles
			160.4 miles
<u>I-25 SOUTH (PUEBLO) TO US-40 WEST EXIT:</u>		<u>I-70 EAST (BURLINGTON, CO) TO US-40 WEST EXIT:</u>	
I-25 North from Pueblo to CO-470 West Exit (#194)	96.0 miles	I-70 West from Burlington to Watkins	141.1 miles
CO-470 West	26.2 miles	I-70 West to US-40 West Exit (Empire/Granby - #232)	62.3 miles
I-70 West Exit (Grand Junction)	0.7 miles		203.4 miles
I-70 West to US-40 West Exit (Empire/Granby - #232)	27.5 miles		
	150.4 miles		
<u>I-70 WEST (GRAND JUNCTION) TO US-40 WEST EXIT:</u>		<u>US-40 WEST EXIT TO 168 GOLDEN DRIVE (COLE CABIN):</u>	
I-70 East from Grand Junction to Silverthorne	170.0 miles	US-40 West & North to Fraser	31.2 miles
I-70 East to US-40 West Exit (Empire/Granby - #232)	26.2 miles	US-40 North to SH 83 (Just Before Railroad Bridge)	3.0 miles
	196.2 miles	Right onto SH 83, Cross Fraser River, Stay Right at Fork	1.2 miles
		Right onto Sunset Blvd at Sunset Ridge Sign	0.2 miles
		Second Right onto Golden Drive to 168 Golden Drive	0.4 miles
			36.0 miles
		<u>US-40 WEST EXIT TO MEADOW RIDGE CONDOMINIUMS:</u>	
		UW-40 West & North to Fraser	31.2 miles
		Right on County Rd 804 (Meadow Ridge Rd) by Safeway	0.8 miles
		W Meadow Mile OR E Meadow Mile to Condominium Unit	0.3 miles
			32.3 miles

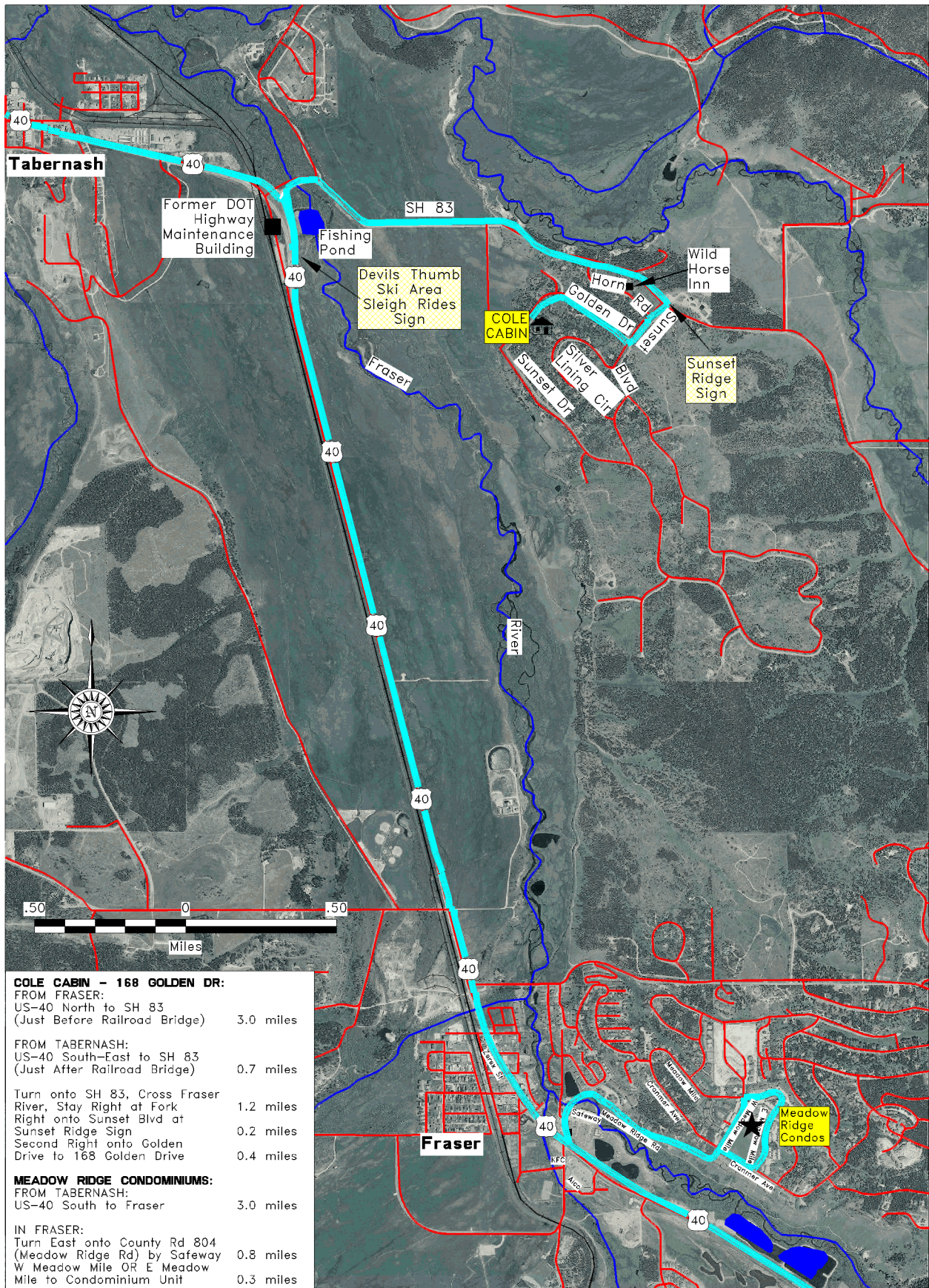
Colorado Again in 2010 Pederson Family Reunion Regional Map With Potential Travel Routes



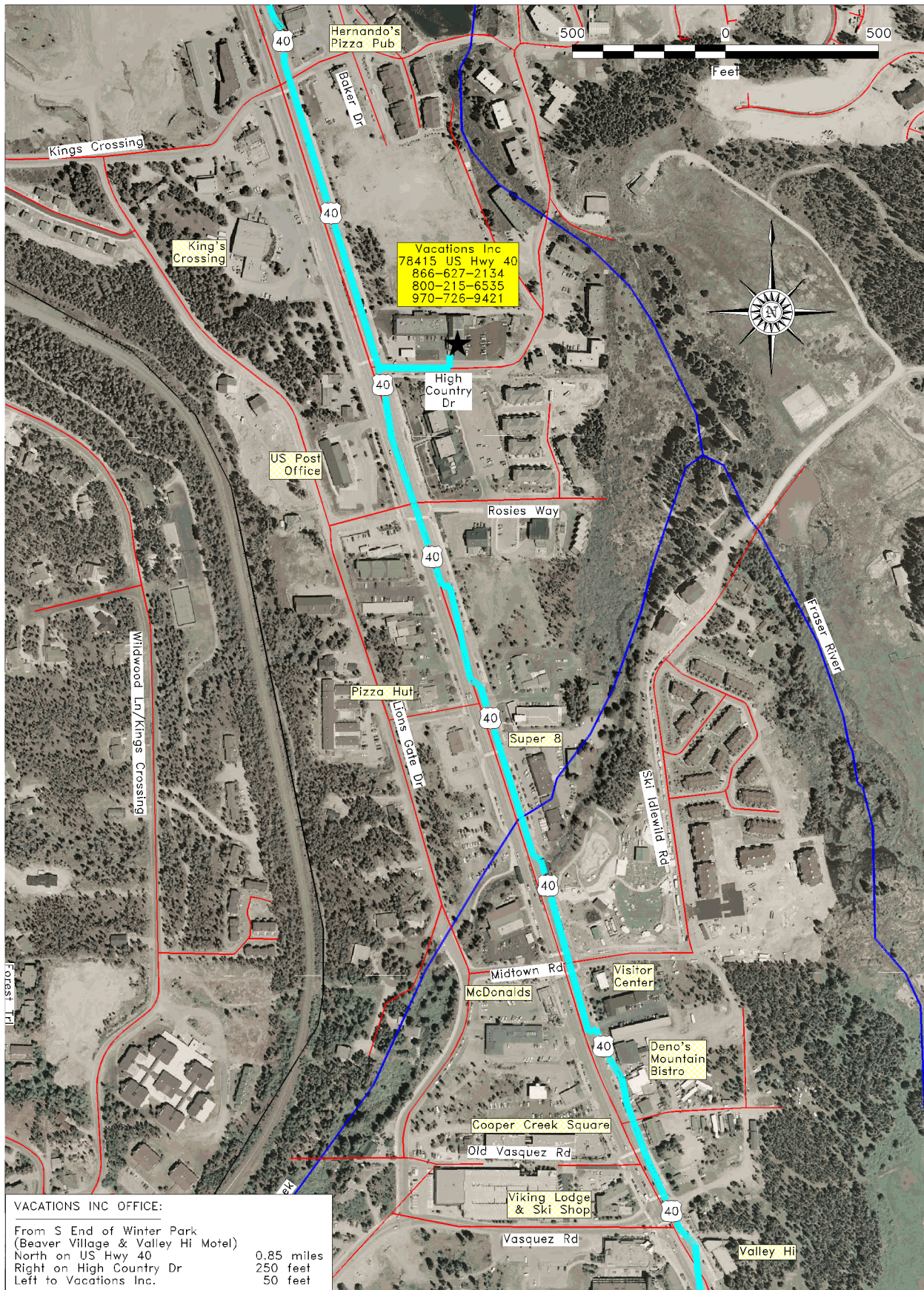
Empire to Winter Park, Fraser & Tabernash Berthoud Pass & The Fraser Valley



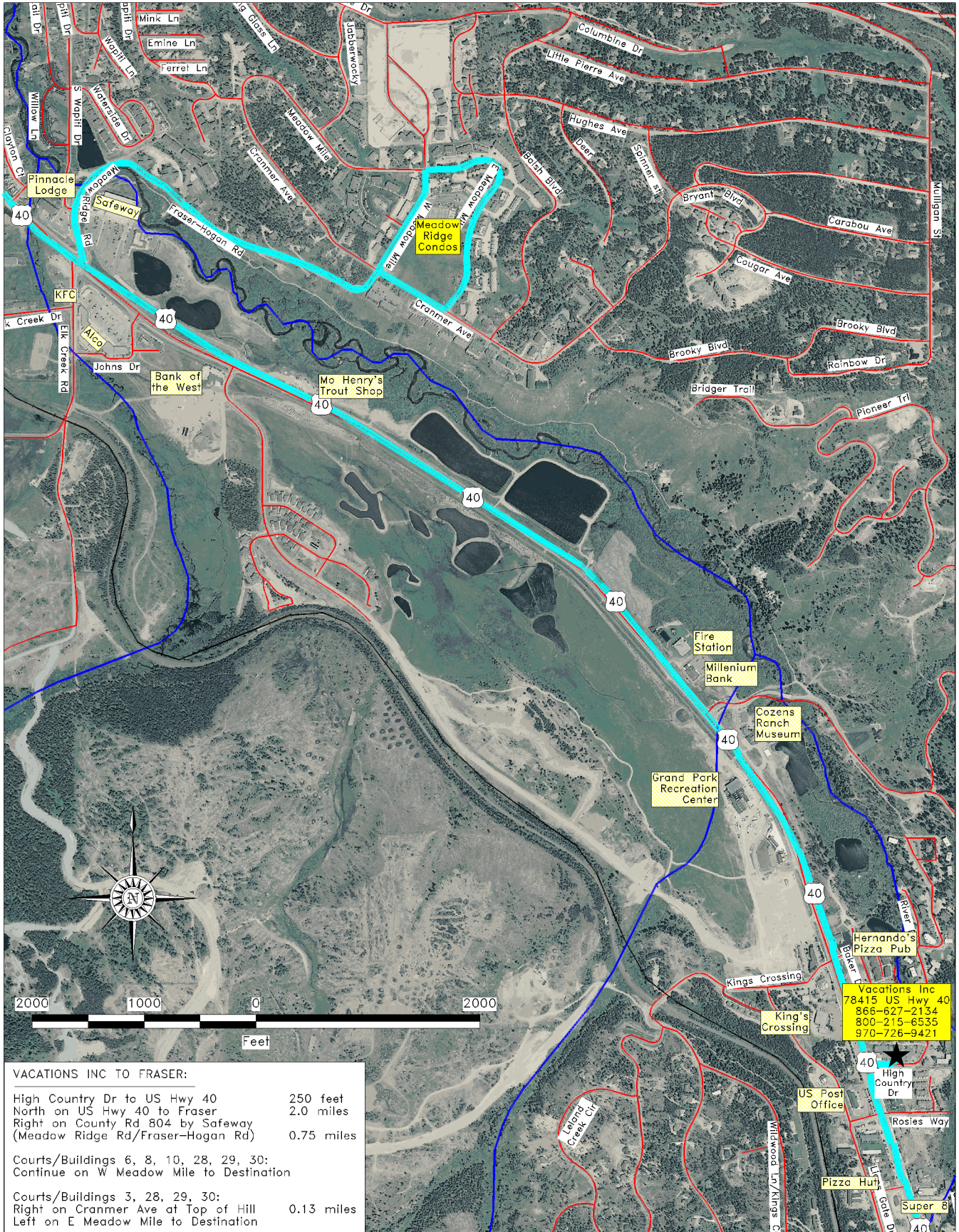
Fraser & Meadow Ridge Condos; Tabernash & Cole Cabin



Vacations, Inc. Office 78415 US Hwy 40, Winter Park, CO



Vacations Inc. (Winter Park) to Meadow Ridge Condos (Fraser)



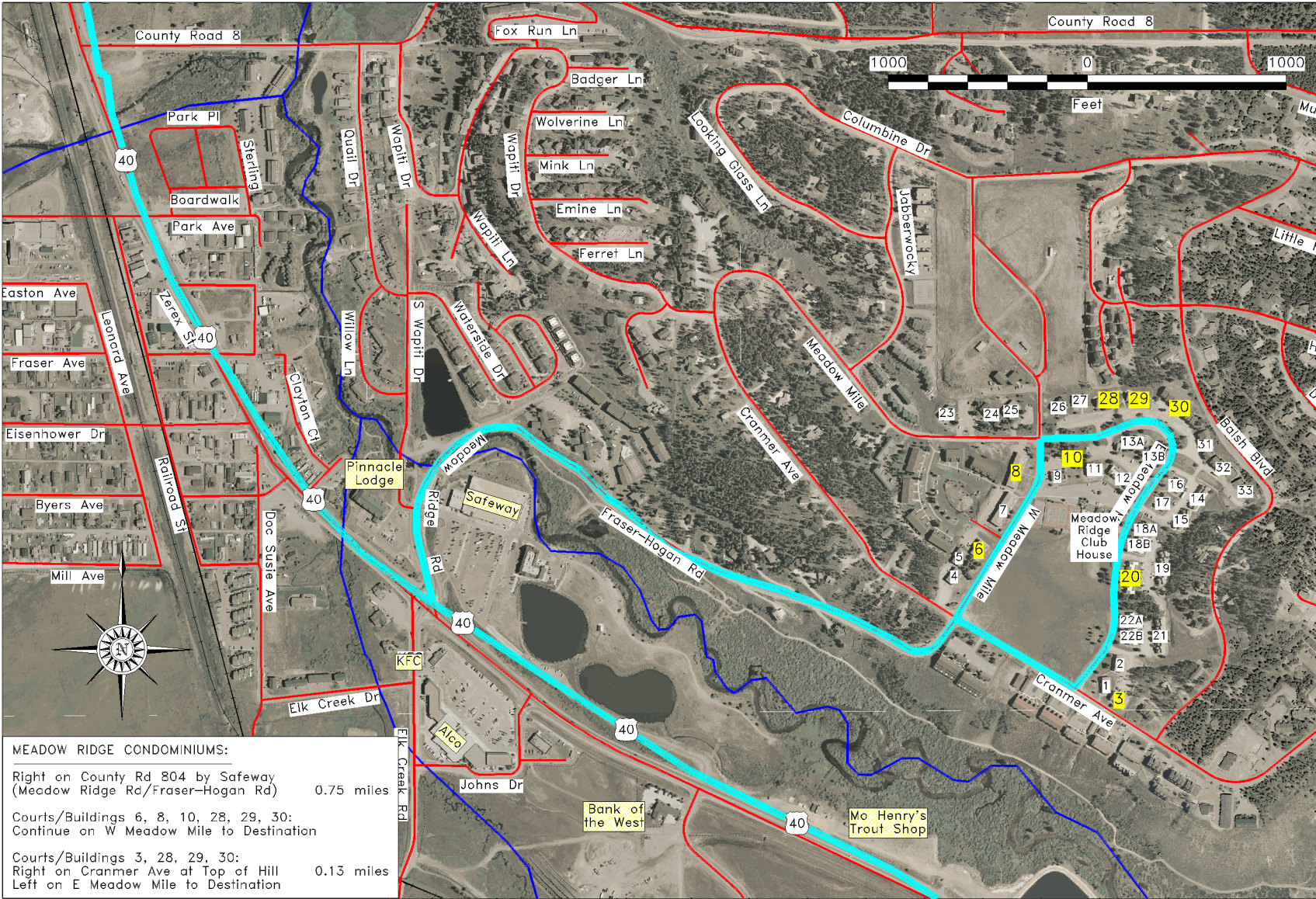
VACATIONS INC TO FRASER:

High Country Dr to US Hwy 40 250 feet
 North on US Hwy 40 to Fraser 2.0 miles
 Right on County Rd 804 by Safeway
 (Meadow Ridge Rd/Fraser-Hogan Rd) 0.75 miles

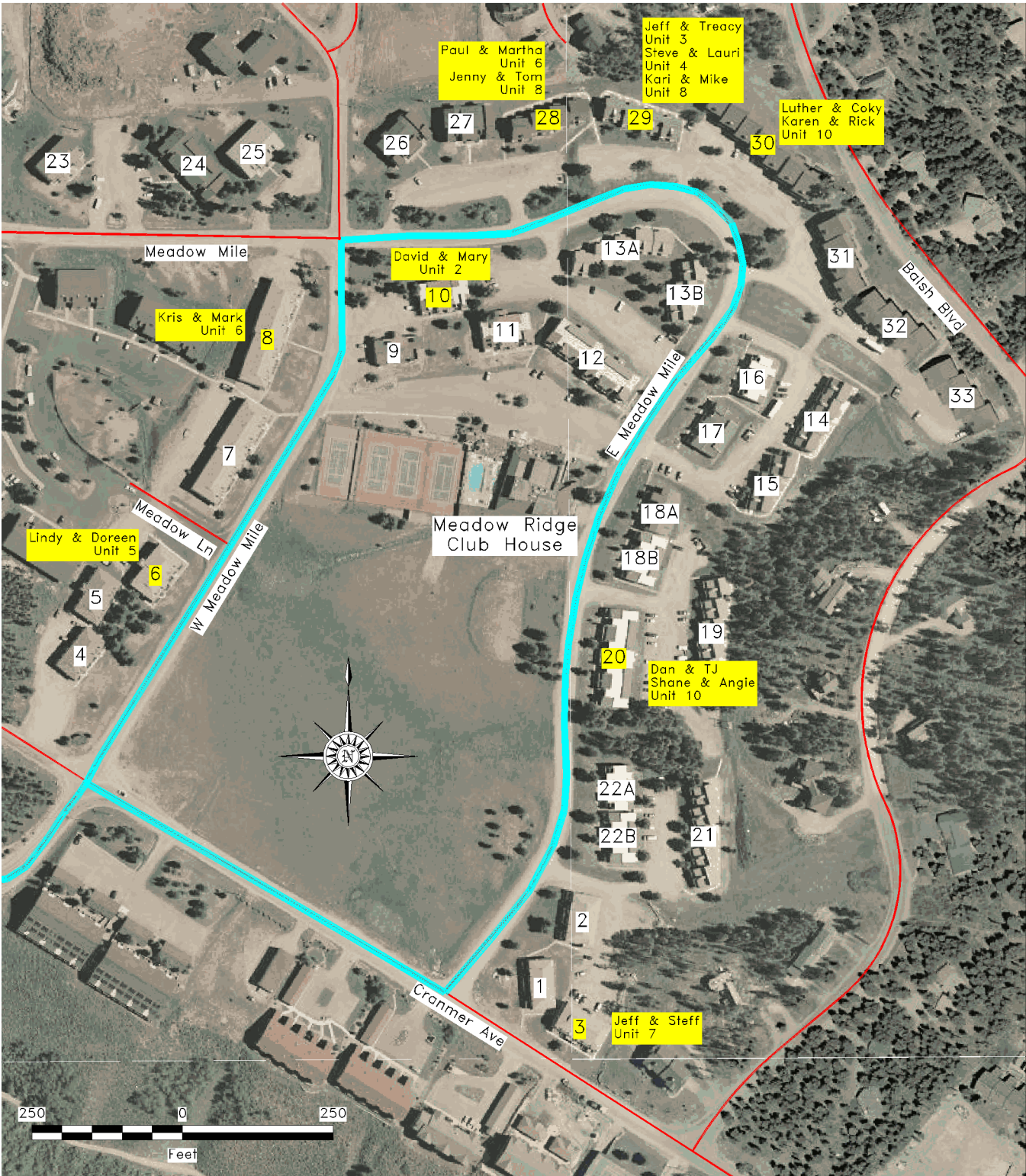
Courts/Buildings 6, 8, 10, 28, 29, 30:
 Continue on W Meadow Mile to Destination

Courts/Buildings 3, 28, 29, 30:
 Right on Cranmer Ave at Top of Hill 0.13 miles
 Left on E Meadow Mile to Destination

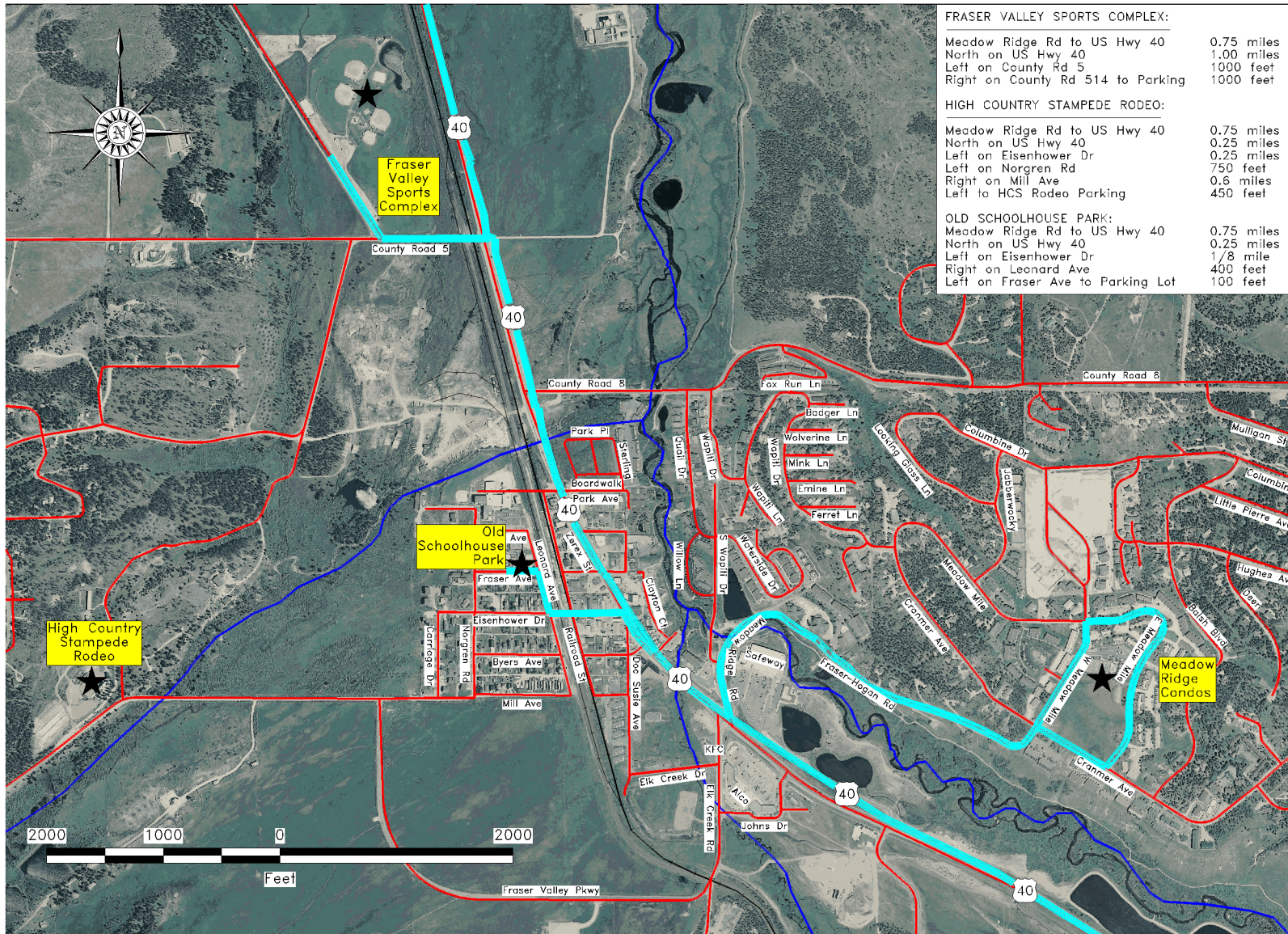
Fraser & Meadow Ridge Condominiums



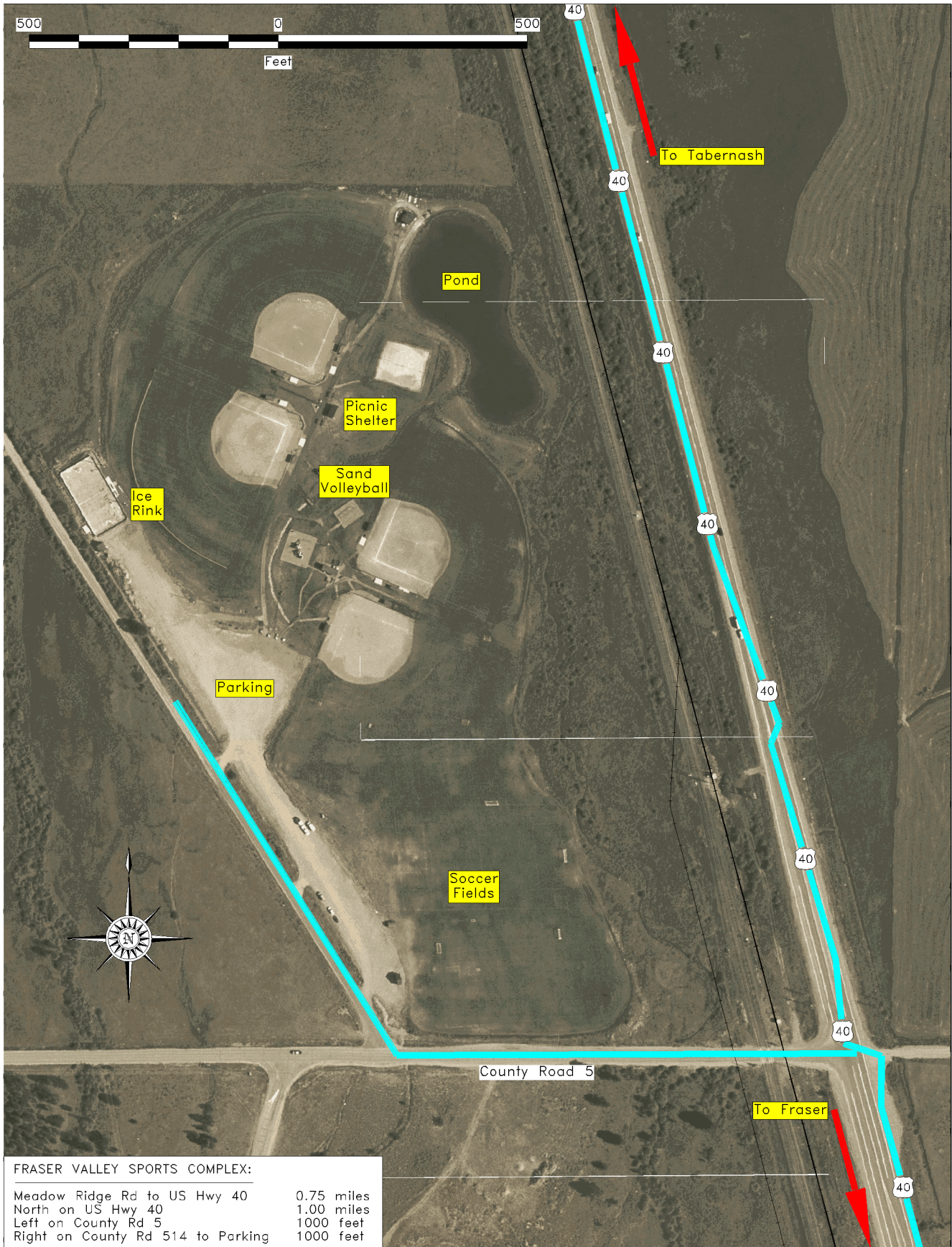
Meadow Ridge Condominiums E Meadow Mile & W Meadow Mile Fraser, CO



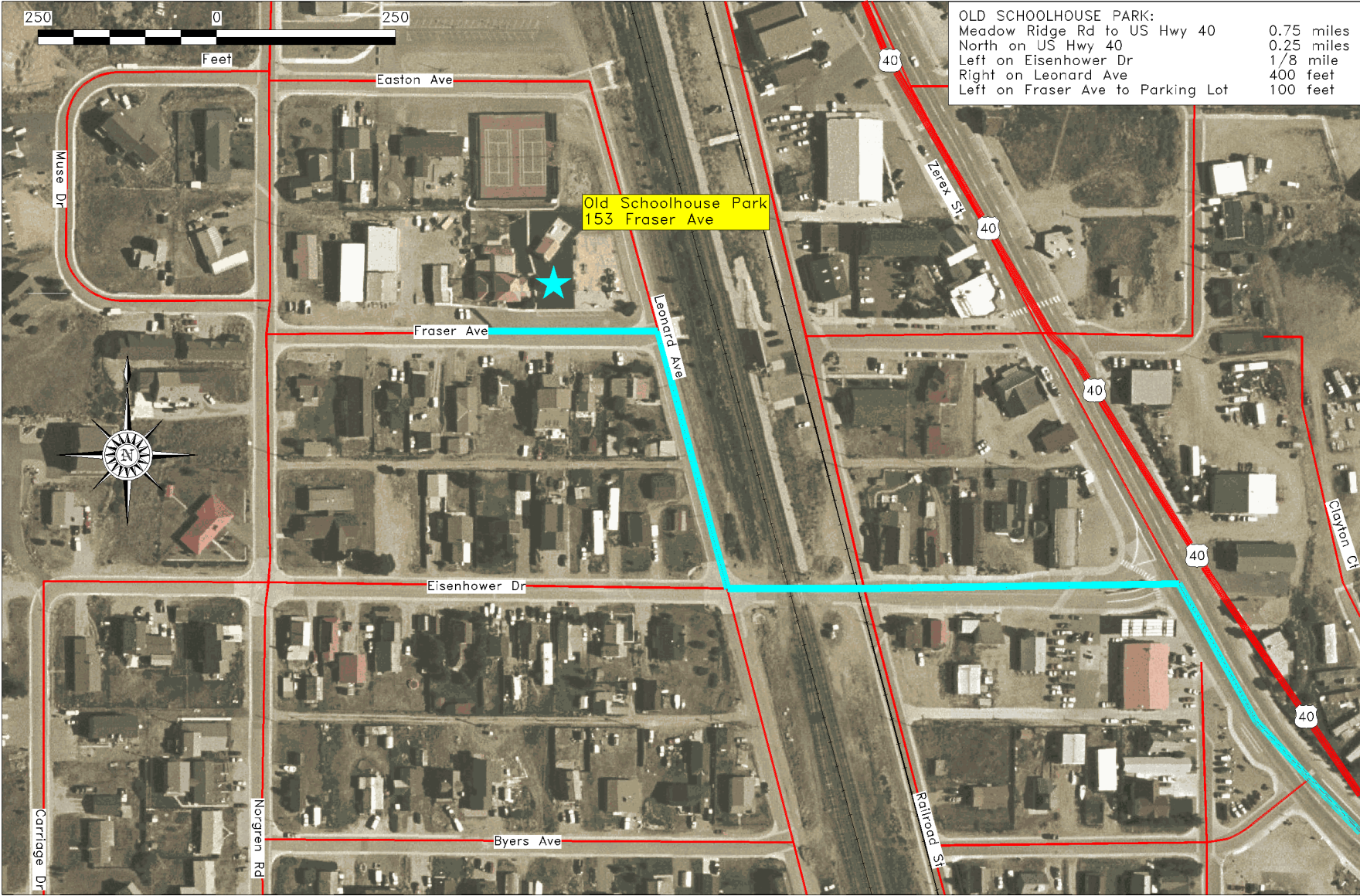
Colorado Again in 2010 Pederson Family Reunion Activities



Pederson Family Reunion: Fraser Valley Sports Complex



Sunday Celebration: Old Schoolhouse Park



Cole Cabin: 168 Golden Dr., Tabernash, CO 80478; (970) 726-1340

